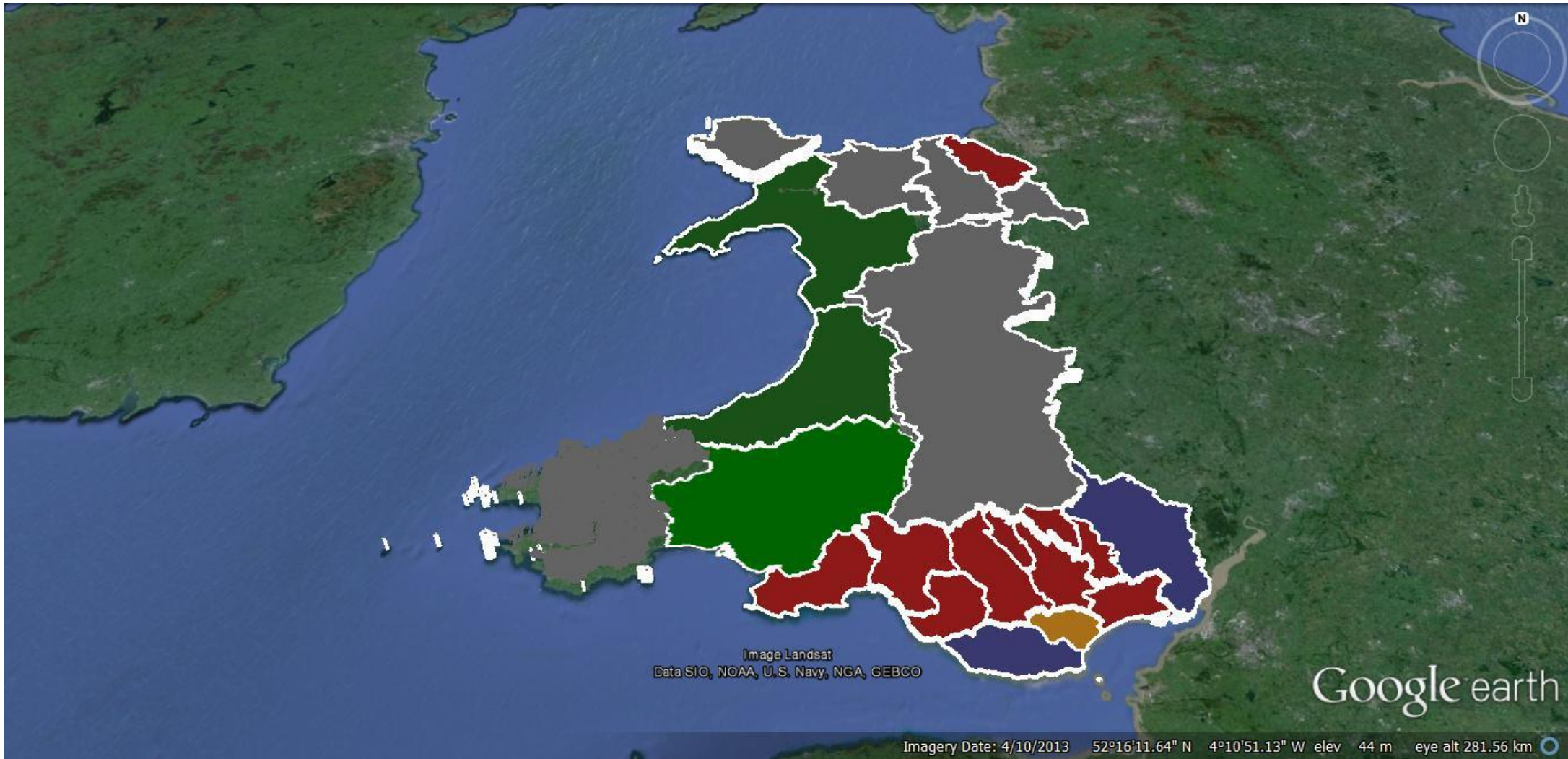


Welsh Local Elections 2004



(Source: County Boundaries from Map It.Org, Google Earth)

The party colours are: Conservative Labour Plaid Cymru Liberal Democrats Independents and the height of each county represents the % lead that the winning party had over the second placed party

Welsh Local Elections 2004

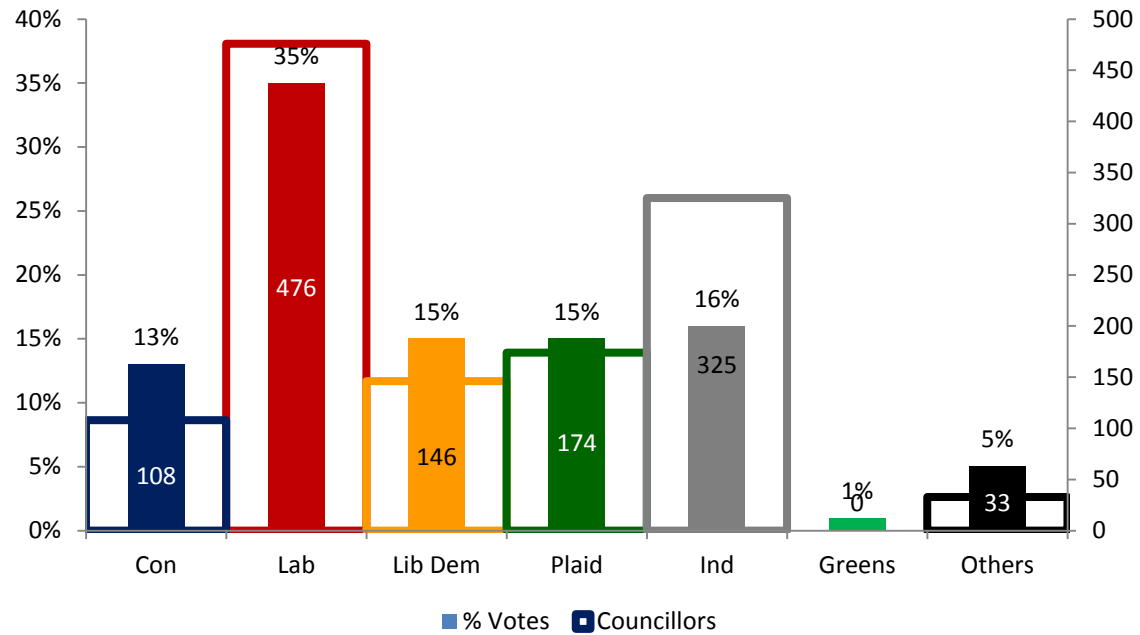
Name of authority	Con	Lab	Lib Dem	Plaid	Ind	Green	Others	Con	Lab	Lib Dem	Plaid	Ind	Green	Others
Blaenau Gwent	0%	61%	13%	5%	20%	1%	0%	0%	+1%	+5%	+1%	+11%	+1%	-19%
Bridgend	14%	39%	22%	7%	17%	0%	0%	0%	-10%	+5%	-3%	+10%	0%	-2%
Caerphilly	3%	48%	2%	35%	11%	0%	1%	+1%	-7%	-4%	-10%	+6%	0%	+1%
Cardiff	22%	30%	33%	10%	2%	1%	2%	+3%	-12%	+5%	+2%	+2%	-1%	+1%
Carmarthenshire	2%	31%	2%	33%	32%	0%	0%	+2%	-11%	-5%	+14%	+7%	-1%	-6%
Ceredigion	0%	3%	20%	39%	33%	0%	4%	0%	-1%	+3%	+1%	-8%	0%	+4%
Conwy	22%	23%	14%	12%	29%	0%	0%	+4%	-8%	-11%	+3%	+12%	0%	0%
Denbighshire	15%	25%	5%	11%	39%	0%	5%	+8%	-4%	+1%	-2%	+4%	0%	-7%
Flintshire	6%	44%	17%	2%	30%	1%	0%	-1%	-4%	+3%	-2%	+5%	0%	0%
Gwynedd	0%	17%	7%	39%	36%	0%	0%	0%	+1%	+1%	-3%	+1%	-1%	0%
Merthyr Tydfil	0%	42%	1%	5%	22%	0%	30%	0%	-6%	-1%	-11%	-12%	0%	+30%
Monmouthshire	42%	20%	18%	3%	16%	0%	0%	+7%	-11%	+4%	+2%	-2%	0%	0%
Neath and Port Talbot	0%	47%	4%	18%	7%	2%	22%	0%	-4%	-3%	+3%	+1%	+2%	+1%
Newport	30%	41%	18%	5%	6%	0%	0%	+2%	-10%	+4%	+2%	+6%	0%	-4%
Pembrokeshire	0%	16%	9%	11%	63%	0%	0%	-9%	-7%	+3%	+5%	+7%	0%	0%
Powys	4%	3%	26%	0%	65%	0%	2%	-2%	0%	+11%	-2%	-10%	0%	+2%
Rhondda, Cynon, Taff	0%	55%	3%	35%	6%	0%	1%	0%	+13%	-3%	-10%	0%	-1%	+1%
Swansea	13%	33%	27%	10%	4%	7%	7%	+2%	-16%	+9%	-1%	-5%	+6%	+5%
Torfaen	6%	53%	10%	3%	25%	1%	2%	+3%	-17%	+1%	-1%	+13%	+1%	0%
Vale of Glamorgan	38%	28%	2%	21%	6%	1%	4%	-1%	-9%	-1%	+2%	+5%	+1%	+4%
Wrexham Maelor	4%	33%	17%	1%	35%	0%	10%	-3%	-8%	+6%	-3%	+8%	0%	0%
Ynys Mon	3%	6%	4%	22%	65%	0%	0%	-4%	-3%	-2%	+5%	+5%	0%	0%

Welsh Local Elections 2004

Name of authority	Con	Lab	Lib Dem	Plaid	Ind	Green	Others
Blaenau Gwent	0	32	3	0	7	0	0
<i>Bridgend</i>	8	22	13	1	10	0	0
Caerphilly	0	39	0	26	8	0	0
<i>Cardiff</i>	12	27	33	3	0	0	0
Carmarthenshire	1	24	0	17	32	0	0
Ceredigion	0	1	9	16	16	0	0
Conwy	12	12	6	10	19	0	0
Denbighshire	7	8	2	7	20	0	3
Flintshire	4	36	10	1	18	0	0
Gwynedd	0	10	6	42	17	0	0
Merthyr Tydfil	0	17	0	0	7	0	9
Monmouthshire	23	9	4	2	5	0	0
Neath and Port Talbot	0	36	2	10	4	0	12
Newport	11	31	6	1	1	0	0
Pembrokeshire	0	9	2	4	45	0	0
Powys	0	4	16	0	60	0	0
Rhondda, Cynon, Taff	0	57	2	13	3	0	0
Swansea	4	32	19	5	5	0	7
Torfaen	0	34	2	0	7	0	0
Vale of Glamorgan	20	16	0	8	1	0	2
Wrexham Maelor	3	19	10	0	20	0	0
Ynys Mon	2	1	1	8	28	0	0

Composition of council at elections (No colour indicates No Overall Control)

Welsh Local Elections 2004



% Votes

